

Toggle Bolt / Tapping Screws Mounting Guide

AP700 Series

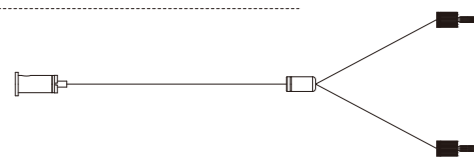
A * Toggle Bolt x 2



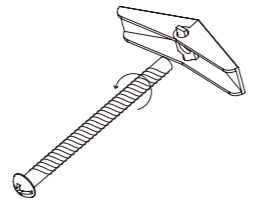
B * Tapping Screws x 2



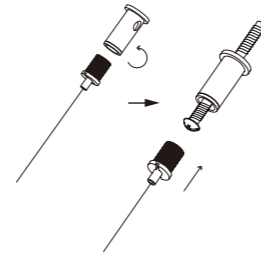
C * Hanging Cable x 2



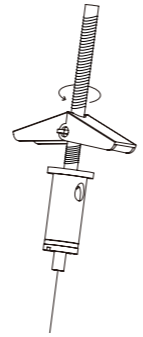
Toggle Bolt Installation



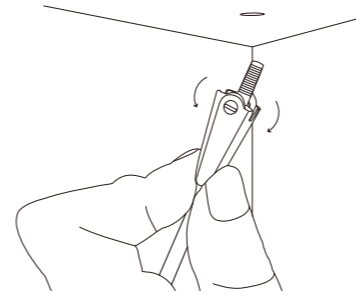
Step 1.1
Remove the (A) screws from the toggle bolts.



Step 1.2
Loosen the top part of the hanging cable (C) and put the (A) screws in.

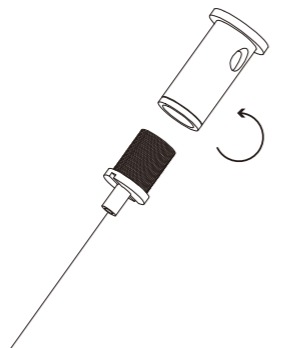


Step 2.1
Screw the toggle bolts into the hanging cable (C).

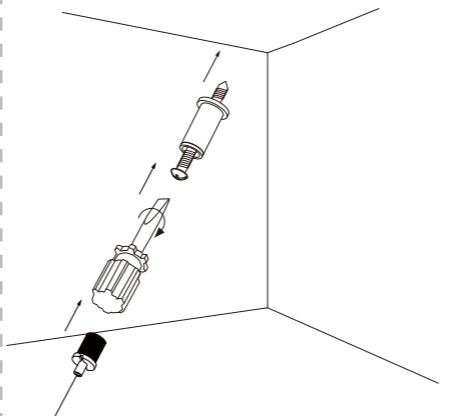


Step 2.2
Squeeze the sides of the toggle bolt (A), then insert into a pre-drilled hole.
*Hole Size - Min: 5/8"(16mm) / Max: 1"(25mm)

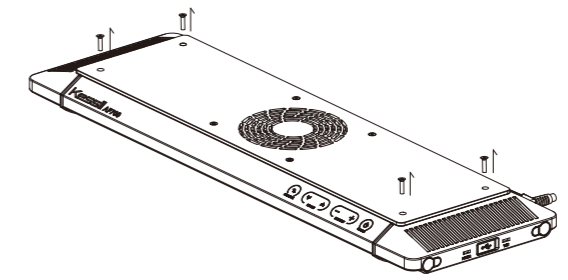
Tapping Screws Installation



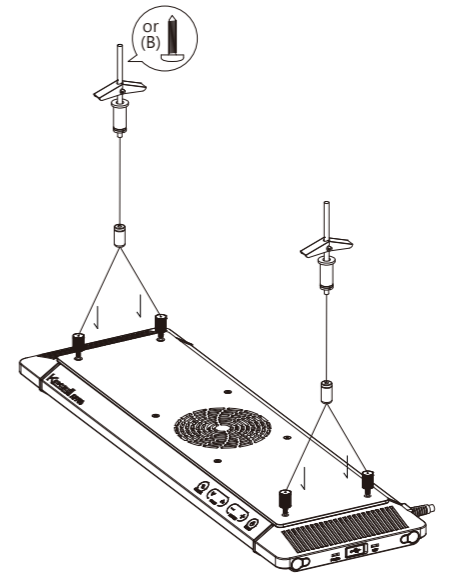
Step 1.
Loosen the top part of the hanging cable (C)



Step 2.
Screw the (B) screws in the wall tightly.



Step 3.
Remove the four corner screws from the AP700 using the hex wrench.



Step 4.
Screw the hanging cable (C) into the corners of the AP700. You are finished!

Kessil[®]
<http://www.kessil.com>



Kessil Lighting
A DiCon Brand
1689 Regatta Blvd,
Richmond, CA 94804
(510) 620-5250