

# CLASSICA™ STRETCH LED



## Safety, Installation and Maintenance Instructions

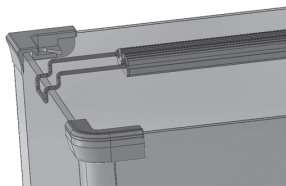
1.



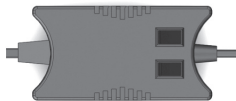
3.



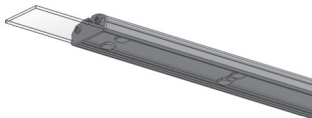
2.



4.



5.



### End of Use Recycling Information

This product is covered by European Directive 2002/96/EC. Please do not dispose of this product or replacement lamps with your normal household waste. To safely and responsibly dispose of the product please ensure all the components are deposited in the appropriate areas of your local civic recycling centre. Proper disposal of this product helps to prevent potential negative consequences for the environment and human health.

All electronic components (this includes the power supply and the lamp holder) should be placed in the electronic waste recycling area.

If a fluorescent lamp is provided with this product it contains mercury, and cannot be disposed of with normal household waste; it should be deposited in the fluorescent lamp recycling area at your local civic recycling centre or taken to any approved recycling point for fluorescent lamps.

### VOLTAGE

Mains Input Voltage	AC 90-240V
Output	DC 12V 1.3A

### IP RATINGS

Luminaire	IP67
Controller	IP22

## KEEP THESE INSTRUCTIONS FOR FUTURE REFERENCE READ AND FOLLOW ALL SAFETY INSTRUCTIONS

**DANGER-** To avoid possible electric shock, special care should be taken since water is employed in the use of aquarium equipment. For each of the following situations, do not attempt repairs yourself; return the appliance to an authorised service facility or discard the appliance.

This product is designed for indoor use and the illumination of aquariums only and will provide a good and safe service life, provided that these instructions are followed. Failure to do so may result in serious personal injury or property damage.

If you are in any doubt about the installation or operation of this product, please consult a qualified and experienced electrician.

Check that the voltage and frequency rating on the product label is the same as your electrical supply before proceeding further.

**WARNING-** To guard against injury, basic safety precautions should be observed, including the following:

- Disconnect all appliances in the aquarium from the mains supply socket before putting your hands in the water or maintaining the Luminaire. Never pull on the cord to remove the plug from the socket, instead grasp the plug and pull to disconnect.
- Always support the Luminaire when fitting to the tank frame, or adjusting the suspension height to physically prevent it from falling into the water.
- Do not operate the Luminaire less than 2 cm above the aquarium water level.
- Regularly check the security of all your Luminaire legs or suspension mechanism parts.
- Do not look directly into the light source.
- Do not touch the light source while it is on. Allow the light source to cool before touching it.
- The Luminaire can get HOT. Never touch the Luminaire while it is operating, allow adequate time for it to cool before attempting any maintenance.
- If the appliance falls into water DO NOT reach for it. Disconnect from the power supply before attempting to retrieve it. If electrical components of the appliance get wet unplug the appliance immediately. If the appliance shows any sign of water leakage disconnect from the power supply immediately.
- To avoid the possibility of the appliance plug or socket getting wet, position it to one side of the wall socket. A 'drip loop' should be arranged for each cord connecting to a power socket. The 'drip loop' is that part of the cord below the level of the socket, or connector, which prevents water travelling along the cord to the socket. See illustration 1.
- Do not use the appliance other than for its intended use. The use of non-Arcadia attachment or accessories is not recommended and may cause an unsafe condition.
- Do not install or store the appliance where it will be exposed to extremes of weather or temperatures below freezing.

### Physical installation

Select a suitable site close to your electricity supply. Do not connect appliance to the mains supply socket during installation. This appliance is for indoor use only. Ensure the appliance is kept in a ventilated area and away from other heat sources. Make sure that the light from the appliance is aimed within the aquarium.

The light fitting can be mounted onto the aquarium using the extendable legs provided. See illustration 2.

### Electrical installation

This appliance must be earthed and the circuit must be protected by a suitable fuse!

Before installing, ensure that the rated voltage and frequency of the Luminaire match that of your power supply, and that the mains lead plug is fully compatible with your mains supply socket. If in doubt, please return the unit to the point of purchase for verification.

This appliance should be earthed to minimise the possibility of electric shock. This appliance is equipped with an electric cord having an equipment earth wire conductor and a grounding type plug. The plug must be plugged into a mains supply socket that is installed and earthed in accordance with all appropriate codes and ordinances.

Ensure the mains cable has a 'drip loop' as shown in illustration 1. Connect the light unit to the power supply before plugging into the mains. Ensure the power supply switches are off before connecting. See illustration 3.

### Operation

There are two switches on the power supply. The switch on the right controls the 1.5W LEDs. The switch on the left controls the 0.24W LEDs. (illustration 4)

### Trouble Shooting

If the Luminaire does not light:

- Check that the mains power is connected and switched on both at the wall (including Timer if used) and on the Luminaire.
- Check that the Luminaire plug is properly fused.
- Check that the Luminaire is rated for the same supply voltage that you are using.

### Maintenance Section:

**Caution!** Disconnect all appliances in the aquarium from the mains supply before putting your hands in the water or maintaining the Luminaire.

Always support the Luminaire when adjusting its height or mountings and physically prevent it from falling into the water.

Regularly check the security of all parts of your hanging mechanism or mountings.

**Cleaning:** Disconnect from the power supply and wait till the Luminaire is cool before cleaning, this not only avoids smears but also reduces the likelihood of any damage from moisture entering the Luminaire.

Both the appearance and performance of your Luminaire can benefit from regular cleaning. A damp cloth is normally adequate to clean the body. Excessive deposits of salt on the underside can reduce light output and are a sign that the Luminaire is too close to the aquarium. These can be removed with the careful use of a damp cloth ensuring that water does not enter the Luminaire body.

The cover over the LEDs can be slid out for ease of cleaning. (Illustration 5)

Take great care when cleaning over the surface of the LEDs. Gentle wiping with a damp cloth should be sufficient to remove any deposits. Do not use excessive force or abrasive materials.